

# FINE FINISH SPRAYERS

Graco's Complete Line of Fine Finish Sprayers and Accessories



M O V I N G   M A T E R I A L S   T H A T   M A T T E R <sup>™</sup>

# THERE IS NOTHING LIKE A GRACO SPRAYER

Experienced contractors know the difference. Graco professional fine finish sprayers are solid investments that perform reliably, year after year.

## TRUST YOUR BUSINESS AND REPUTATION TO GRACO

Graco is committed to providing the highest quality finish sprayers available, backed by the industry's best warranty.

## AMERICAN BUILT QUALITY

Graco professional scarifying solutions are designed, manufactured, and assembled in the USA with global components.

## INDUSTRY-LEADING WARRANTY

Behind every Graco sprayer is the industry's strongest warranty. You may never use Graco's warranty – but if you do, we will be there.



## GRACO-ONLY SOLUTIONS TO PROVIDE THE BEST FINISH AND KEEP YOU SPRAYING



PATENTED

### PROFESSIONAL FINISH QUALITY

#### Precision-Cut RAC X<sup>®</sup> FF LP SwitchTip

- Finer atomization and soft edges for easier overlapping with pre-orifice design
- Sprays at lower pressures with less overspray and up to 2X life
- Reduces prep and cleanup



PATENTED

### LIGHTWEIGHT, ERGONOMIC DESIGN

#### Contractor PowerShot Standard

- Electric-powered gun virtually eliminates spits
- Industry's lightest gun featuring the lightest trigger pull
- Operates with every airless sprayer

CORDLESS

PATENT PENDING

### EXCLUSIVE BREAKTHROUGH CORDLESS TECHNOLOGY

- Industry's only high performance cordless finishing sprayer
- Spray up to 6 gallons before charging. Includes 2 DEWALT<sup>®</sup> FlexVolt<sup>®</sup> batteries for all day spraying.
- Expanded application capability with freedom from power cords and outlets



PATENTED

### SUPERIOR FINISH AND VERSATILITY

- EDGE<sup>®</sup> II Plus Gun – independent controls for material volume, airflow, and spray fan size
- 4X more productivity
- Quick Release Needles – easily change or clean needle sets, without tools

SMART START

PATENTED

### LONGER LIFE AND QUIETER JOB SITES

#### SmartStart/SmartComp<sup>™</sup> Systems

- On-demand power control – if you're not spraying, it's not running
- Reduces job site noise, resulting in less fatigue



PATENTED

### SPRAY IN ANY DIRECTION

#### FlexLiner<sup>™</sup> Bag System

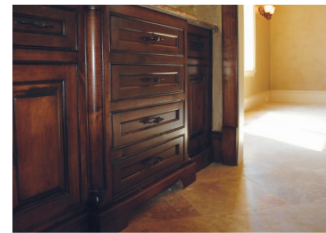
- Spray at any angle with no adjustment – even upside down
- Easy cleanup: reuse liner or toss, no suction tube to clean



# COMPLETE FINE FINISH SPRAYING SOLUTIONS



Graco has the right sprayer for your fine finishing applications. Whether it's a FinishPro HVLP, FinishPro Air-Assisted Airless sprayer, or an Airless sprayer, Graco's line of fine finish sprayers yield unmatched results in productivity and quality of finish.



## HVLP (HIGH-VOLUME LOW PRESSURE)

- Spray small to medium extreme control jobs
- Standard, ProContractor™ and ProComp packages to fit your needs



## AIRLESS

- Spray small to large project without thinning
- High end finish quality with RAC X FF LP SwitchTips



## AIR-ASSISTED AIRLESS

- Large projects requiring large material volumes
- Precision spraying and increased productivity
- Softer pattern, more control, higher transfer, and less overspray
- Quickly switch from air-assisted airless to pure airless spraying



CLASSIFICATION	FINISHPRO HVLP	AIRLESS	FINISHPRO II AIR-ASSISTED AIRLESS
	<b>EXTREME CONTROL</b>	<b>HIGH PRODUCTIVITY</b>	
Technology	High volume, low pressure air results in fine professional finish with extreme control	High-pressured fluid results in fine quality finish with high production rate	High-pressured fluid combined with pressurized air results in fine quality finish with high production rate
Finish Quality	Automotive Quality	Furniture/Cabinet Quality	
Spray Pattern Size	1/8 in – 8 in Fan Width (0.3 cm – 20 cm)	2 in – 12 in Fan Width (4 cm – 30 cm)	
Transfer Efficiency (% of material sprayed that adheres to the surface vs. in the air)	85 – 95%	50 – 60%	70 – 80%
Typical Applications	Small, Detailed Work Railings, Shutters, Mantels, Tubs, Trim, Staircases, Cabinets, Furniture	Medium – Large Surfaces Doors, Trim, Cabinets, Molding, Garage Doors, Lockers, Decorative Steel Structures and much more	
Characteristics	Most Control	Fast Application	Best Balance Between Speed and Quality
Average Job Size	Under 3 Gallons	Solutions for every job size	Over 3 Gallons
Power Source	Corded	Corded or Cordless	Corded

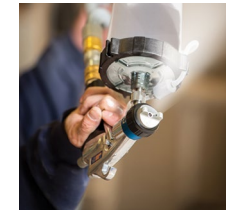
## HVLP SOLUTIONS FOR EVERY APPLICATION

Engineered for superior atomization in the widest range of materials, Graco HVLPs are one of the coolest running, longest life HVLP sprayers on the market. Only Graco is committed to the needs of professional contractors by offering three different series of fine finish airless sprayers: Standard, ProContractor, and ProComp models, to make sure you deliver a quality finish on every job.



### GREATER CONTROL (PATENTED)

- Simplified flow control and easy operation – EDGE II gun
- Independent pattern, airflow, and fluid flow controls – EDGE II PLUS gun



### INCREASED PRODUCTIVITY

- Convenient FlexLiner Bag System makes filling and spraying fast and easy
- Spray a full quart in any direction, even upside down, without losing prime
- Quick color change and storage of materials with additional FlexLiner cups



### EASY CLEANUP

- Reuse FlexLiner cups or toss, no suction tube to clean
- Fast gun cleaning with quick-release needle and no-tools nozzle removal

### COOL RUNNING SYSTEMS

- Systems only run when trigger is pulled with SmartStart feature – extending life and reducing heat\*
- Set TurboControl turbine speed to match the performance required

### ON-DEMAND POWER CONTROL

#### SmartStart Turbine\* (PATENTED)

- Automatically shuts off when not in use – if you're not spraying, it's not running
- Reduces job site noise, resulting in less fatigue

### SMALLER AND LIGHTER

- Maximum job site portability – get jobs done faster and easier
- Supreme durability and turbine protection with rugged stainless steel enclosure
- Easier transport and refilling with on-board gun and cup holder\*

\*ProContractor and ProComp systems only.





# EDGE II HVLP GUNS

## ACHIEVE THE HIGHEST QUALITY FINISH

Gain the competitive edge you need with the cutting-edge technology available only in the HVLP EDGE II and EDGE II PLUS guns.



HVLPE EDGE II Gun with FlexLiner – 17P481



HVLPE EDGE II Plus Gun with FlexLiner – 17P483



### SINGLE USER CONTROL EDGE II Gun

- One simple control to adjust both material and airflow together
- Optimized for most fine finish applications
- Quick adjustment with 360° rotation indicator for repeatable spraying

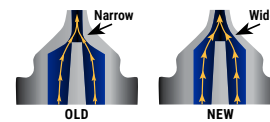


### ULTIMATE CONTROL EDGE II Plus Gun

- Independent user controls
  - Material volume control
  - Air flow control
  - Spray fan size control
- Quick adjustment with full 360° rotation
- Separate material volume and air controls
- Turn to adjust pattern height



## GRACO-ONLY TECHNOLOGY ON ALL EDGE II AND EDGE II PLUS GUNS:



### FINISH JOBS FASTER

- 4X more productivity to finish jobs in 25% less time
- Increased fluid flow in every needle with exclusive Graco air cap design



### MAINTENANCE-FREE SPRAYING IN ANY DIRECTION

- **FlexLiner Bag System** PATENTED
- Spray at any angle with no adjustment – even upside down
- Easy cleanup: reuse liner or toss, no suction tube to clean
- Easy color change with extra cups on hand

### THE EASIEST MAINTENANCE

#### Quick Release Needles PATENTED

- Change out needles with just a click
- Easy to change, easy to clean – no tools needed



### ALL-DAY SPRAYING COMFORT

#### Ergonomic Gun Handle

- Lightweight and comfortable design
- Form-fitted handle stays cool to the touch

#### ULTRALIGHT TRIGGER

##### EasyGlide™

- 75% lighter trigger pull than the competition
- 2-finger design provides ultimate control

### EASY SPRAY PATTERN ADJUSTMENTS

#### Adjustable Air Cap

- 3-position rotation quickly changes spray pattern – horizontal, vertical, round



#### Round Pattern

1/8 in – 4 in (0.3 cm – 10 cm) Diameter

#### Horizontal Fan

1 in – 8 in (2.5 cm – 20 cm) Width

#### Vertical Fan

1 in – 8 in (2.5 cm – 20 cm) Width



HVLP GUNS	PART #
HVLP EDGE II Gun with FlexLiner	17P481
HVLP EDGE II Gun with Metal Cup	17P653
HVLP EDGE II Plus Gun with FlexLiner	17P483
HVLP EDGE II Plus Gun with Metal Cup	17P484



graco.com/HVLPvideo

SEE WHY CUSTOMERS  
CHOOSE FINISHPRO HVLP



## CHANGE OUT NEEDLES WITH JUST A CLICK – NO TOOLS NEEDED!

How It Works:



1) Remove front air cap and nozzle

2) Slide trigger lever to release needle

3) Pull needle out

# FINISHPRO HVLP 7.0 AND 9.0



# FINISHPRO HVLP 7.0, 9.0 AND 9.5



## EVERYDAY RELIABILITY, EXCLUSIVE TURBOFORCE™ TECHNOLOGY

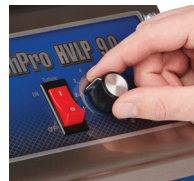
- Perfect for small jobs
- Only the essential features you need



### HIGHER PRODUCTION AND PERFORMANCE

#### Exclusive TurboForce Technology

- More pressure throughout each stage
- Less material thinning required with higher airflow and air pressure
- Generates less heat and provides longer turbine life



### QUIET, ADJUSTABLE POWER

- Adjust the TurboForce turbine speed to match the performance required
- Runs quieter and extends turbine system life
- Reduces heat buildup



### SUPERIOR FILTERING

- Washable filter extends motor life and ensures a quality finish
- No tools required to remove
- Outperforms foam filters used on other HVLP sprayers



### SINGLE USER CONTROL

- One simple control to adjust both material and airflow together
- Optimized for most fine finish applications
- Quick adjustment with 360° rotation indicator for repeatable spraying

FinishPro HVLP 9.0  
Standard Series  
17N264



Ready to spray: complete with Edge II Spray gun, #3 Fluid Set, and 20' Super-Flex Air Hose

### MAINTENANCE-FREE SPRAYING IN ANY DIRECTION

#### FlexLiner Bag System

- Spray at any angle with no adjustment – even upside down
- Easy cleanup: reuse liner or toss, no suction tube to clean
- Easy color change with extra cups on hand

### MORE CONTROL AT THE GUN

- 15% lighter weight than other leading brands
- No tools needed to connect
- 20 ft length (Standard Series) or 30 ft length (ProContractor and ProComp Series)

### SMARTER AND LIGHTER

- Supreme durability and turbine protection with rugged stainless steel enclosure

## WORK SMARTER, FINISH MORE JOBS

- Ideal for small-to-medium jobs
- Loaded with features that offer convenience, control and produce a superior spray finish



### ON-DEMAND POWER CONTROL

- Automatically shuts off when not in use – if you're not spraying, it's not running
- Reduces job site noise, resulting in less fatigue
- Reduces heat and extends turbine life



### USER-FRIENDLY OPERATION

- Highly visible LED display to indicate turbine setting
- Light blinks to indicate filters need cleaning



### ULTIMATE CONTROL

- With independent user controls for material volume, air flow and spray fan size
- High flow design increases productivity over other brands
- FlexLiner Bag System

### ProContractor Series sprayers also include most Standard Series features:

- Turbo Control System
- Exclusive TurboForce Technology
- FlexLiner Bag System
- Super-Flex Air Hose
- Stainless Steel "Tough Box" Design

### SUPERIOR FILTRATION

- Automotive-grade filter has high-performance filtration
- Outperforms foam and traditional paper filters used on most HVLP systems

### CONVENIENT TOOL STORAGE

- Separate tool storage for extra needles and nozzles

### USER-FRIENDLY GUN STORAGE

- Holds gun when not in use
- Allows for easy paint refills with less spills

FinishPro HVLP 9.5  
ProContractor Series  
17N267



Ready to spray: complete with Edge II PLUS Spray gun, multiple Fluid Sets and 30 ft Super-Flex Air Hose

FINISHPRO HVLP STANDARD SPRAYERS	PART #
FinishPro HVLP 7.0	17N263
FinishPro HVLP 9.0	17N264

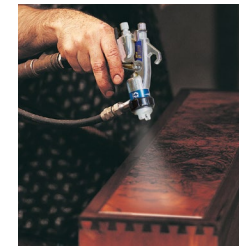


FINISHPRO HVLP PROCONTRACTOR SPRAYERS	PART #
FinishPro HVLP 7.0	17N265
FinishPro HVLP 9.0	17N266
FinishPro HVLP 9.5	17N267



## SUPERIOR PRODUCTIVITY AND DURABILITY

- Ideal for medium-to-large jobs
- Higher production and more control with an expanded range of coatings, producing a superior spray finish
- Double the fluid capacity
- Lighter gun weight minimizes fatigue throughout the day
- Material hose designed to provide easier spraying in tight areas



### ON-DEMAND AIR SUPPLY Integrated Compressor

- Lighter gun weight minimizes fatigue throughout the day
- Pressurize remote cup up to 25 psi
- Allows spraying of thicker materials
- Quick connect hose connections



### FEWER REFILLS 2-Quart Remote Cup

- Increase productivity and ease-of-use without cup mounted on the gun
- Fine tune pressure with pressure regulator and gauge
- Includes belt hook and convenient shoulder strap



### SMALL JOB FLEXIBILITY 1-Quart FlexLiner Cup

- Includes conversion kit to use gun-mounted 1 qt FlexLiner cup



### ProComp Series sprayers also include ALL ProContractor Series features:

- Turbo Control System with LED Display
- Exclusive TurboForce Technology
- FlexLiner Bag System
- Super-Flex Air Hose
- SmartStart On-Demand Turbine
- EDGE II Plus Gun
- Industry-Leading Dual Filtration System
- Utility Toolbox
- On-board Gun and Cup Holder



FINISHPRO HVLP PROCOMP SPRAYER	PART #
FinishPro HVLP 9.5	17N269

# FINISHPRO HVLP ACCESSORIES

## ORDERING OPTIONS

### QUICK-RELEASE FLUID SETS

For HVLP EDGE II guns only. Change out needles from the front of the gun with just a click.

PART NUMBER	NEEDLE	SIZE	MATERIAL
17P485	#2	.032 in (0.8 mm)	Ultra fine finish with inks, dyes, non-wiping stains, automotive finishes
17P486	#3	.051 in (1.3 mm)	Fine finish lacquers, stains, enamels, epoxies, urethane, varnish
17P487	#4	.071 in (1.8 mm)	High output with enamels, epoxies, urethane, varnish, primers
17P488	#5	.087 in (2.2 mm)	Higher output with enamels, epoxies, urethane, varnish, primers, latex, multi-spec
17P489	#6	.098 in (2.5 mm)	Higher output with enamels, epoxies, urethane, varnish, primers, latex, multi-spec
17P490	#7	.115 in (2.8 mm)	Highest output with enamels, epoxies, urethane, varnish, primers, latex, multi-spec



PART NUMBER	DESCRIPTION
-------------	-------------

### ARTISAN AIR VALVE KIT

17S192	Provides the ultimate air control for specialty, multi-spec applications. Plugs directly into back of EDGE II guns
--------	--



### HVLP EDGE II GUN EXTENSION, 12 IN (30 CM)

17P491	Attaches directly to the HVLP EDGE II gun for extended reach and spraying hard-to-reach areas. Ability to spray in any direction - 360° rotation.
--------	---



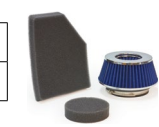
### HVLP CUPS, POTS AND LINERS

17R462	32 oz (.94 L) FlexLiner HVLP Assembly (Cup, Liner, Lid, Cap)
17A226	32 oz (.94 L) FlexLiner Bags (3-Pack)
17P212	32 oz (.94 L) FlexLiner Bags (25-Pack)
244130	1 qt (.9 L) Siphon Metal Cup
196468	1 qt (.94 L) Siphon metal cup adapter
17S115	1/2 qt (.47 L) Cup over kit - EDGE II only
17S116	1/2 qt (.47 L) Cup over kit - EDGE II PLUS only
287819	2 qt (1.9 L) Cup with Lid and 5 ft (1.5 m) Material and Air Hose - for use with ProComp Sprayer



### FILTERS AND STRAINERS

17R296	Standard Series Filter Kit
17R298	ProContractor and ProComp Series Filter Kit



PART NUMBER	DESCRIPTION
-------------	-------------

### SUPER-FLEX HOSES AND FITTINGS

17R299	Super-Flex Whip Air Hose, 4 ft (1.2 m)
17R300	Super-Flex Air Hose, 20 ft (6.1 m)
257159	Super-Flex Air Hose, 30 ft (9 m)
241423	Super-Flex Material and Air Hose Assembly with Quick Connects, 30 ft (9 m) - Use with Remote Gun (not included)
240476	Material Hose, 3/8 in x 30 ft (4.8 mm x 9 m) - Use with Remote Gun (not included)
17R301	Quick Disconnect Ball Valve (Air Hose to Gun)
240282	Quick Disconnect Fitting (Air Hose to Sprayer)
240069	2 Gun Y Connector (f/m/m)



### MAINTENANCE AND REPAIR KITS

256960	HVLP EDGE II Gun Packing Repair Kit
17P708	HVLP EDGE II Gun Full Seal Kit
17P709	HVLP EDGE II Gun Air Cap
256957	Quick Clean Check Valve (Full Assembly)
256956	Quick Clean Check Valve Repair Kit (3-Pack)
256953	Cleaning Brush Kit
256954	Deluxe Cleaning Kit - Includes Detailed Brushes and Picks
M71425	2 qt (1.9 L) Remote Cup Gaskets (5-Pack)
256959	Remote Cup Shoulder Strap
M70702	#4 Ford Viscosity Cup





# FINISHPRO GX 19 CORDED

## AIRLESS SPRAYER

The fast, portable, and affordable solution for small finishing jobs that every finishing contractor encounters. Perfect for a dedicated lacquer or water based sprayer.

### GRACO-ONLY TECHNOLOGY TO PROVIDE THE PERFECT FINISH AND KEEP YOU SPRAYING:

#### EASY MATERIAL HANDLING 1.5 Gallon Hopper

- Ideal for spraying small amounts of material
- Faster cleanup with smooth inside surface – solvent resistant
- Never mess with a drain line again – drain line hook keeps drain tube in place



#### EASY MAINTENANCE AND LONG LIFE

##### ProX™ Power-Piston Pump

- Exceptional durability and long-life piston pump
- Exclusive, lifetime lubricated wiper pad for maintenance-free operation
- Modular pump components for easy maintenance

#### PERFECT AIRLESS FINISH RAC X™ Fine Finish Low Pressure (FF LP) Switchtip™

- Perfect Airless Finish
- Easiest pattern overlap
- Up to 2X the tip life of standard tips

#### MAXIMUM CONTROL AND COMFORT

##### FTx™ Spray Gun

- Easy Out™ 100 mesh gun filter installed to minimize tip clogs and protect finish
- EasyGlide Swivel provides maximum flexibility for effortless hose management

#### EXTREMELY PORTABLE

- Lighter than any competitive system
- Easy Carry Handle makes transportation easy

#### GET MORE WORK DONE

- Powerful Brushed DC Motor



# FINISHPRO GX 19 CORDLESS

## AIRLESS SPRAYER

Improve your finish with unmatched performance, portability and mobility

### INCLUDES ALL THE FEATURES OF THE GX 19 CORDED, PLUS THE FOLLOWING ADDED CAPABILITIES



#### ULTIMATE POWER AND PROVEN PERFORMANCE Powered By DeWALT®

- High capacity 6ah FlexVolt batteries – spray up to 6 gallons before charging is required
- Delivered complete with two batteries



#### Brushless DC Motor

- Powerful brushless DC motor provides extended battery run time
- Lightweight, compact design allows for increased portability

#### SPRAY IN THE TIGHTEST AREAS WITH EASE

##### Contractor PC Compact™ Gun (PATENTED)

- Smallest, most light weight mechanical gun on the market
- 50% lighter trigger pull
- ProConnect cartridge allows you to rebuild the gun in seconds

SEE WHY CUSTOMERS CHOOSE FINISHPRO GX 19 CORDLESS



graco.com/GX19CordlessReview

## THE INDUSTRY'S FASTEST, MOST PORTABLE FINISHING SPRAYER EVER BUILT!



#### ELIMINATE DOWNTIME

Service the piston pump in 4 simple steps with a modular pump cartridge – no tools needed



1) Remove hopper



2) Unlatch and lift door



3) Remove pump



4) Replace cartridge

AIRLESS SPRAYERS	PART #
FinishPro GX 19 Coded	17F924
FinishPro GX 19 Cordless	25U341



# AIR-ASSISTED AIRLESS TECHNOLOGY

## HVLP QUALITY FINISH AT THE SPEED OF AN AIRLESS SPRAYER

Material is delivered to the gun at lower pressure than traditional airless (500-1500 psi vs. 1500-3000 psi) and partially atomized through a small tip. Full atomization is achieved by adding a small amount of air (5-35 psi) to the edges of the spray fan, resulting in a softer pattern, more control, higher transfer, and less over spray.

## HIGH-PERFORMANCE FINE FINISH SPRAYING FINISHPRO II AIR-ASSISTED AIRLESS SPRAYERS

Only Graco delivers industry-leading features along with proven quality and unmatched performance in a portable, self-contained, air-assisted airless system.

**G40 Airless Gun**  
with an ultralight trigger pull and ergonomic fit

**SmartControl with Digital Display**  
accurately shows spray pressure with out pressure fluctuations

FinishPro II 395  
PC Pro  
17C417



**Endurance Piston Pump**  
lasts 2X longer than the next leading brand

**Onboard Air Compressor**  
with SmartComp delivers a superior finish

## FINISH EVERY JOB, EVERY DAY – FASTER WITH GRACO'S AIR ASSISTED AIRLESS SPRAYERS



### PRODUCTION FINE FINISH DELIVERS:

- High end finish quality at production speeds with no thinning
- Low overspray – 70-80% transfer efficiency
- Ultra light trigger pull and ergonomic gun provides you the ability to easily spray all day



## SWAP YOUR PUMP IN LESS THAN 1 MINUTE – NO SPECIAL TOOLS, PINS OR PARTS TO LOSE

Fast Pump Removal – 3 Simple Steps



1) Loosen the clamping nut



2) Open door and remove pump



3) Remove hose and suction tube



## ELIMINATE COSTLY DOWNTIME

### ProConnect

(Available on FinishPro II Models)

- No-Tools Pump Replacement System
- Quickly repair your pump on the jobsite
- Eliminate downtime waiting on replacement parts or service
- Exceptional durability and long life piston pump



# FINISHPRO II 395 PC

## AIR-ASSISTED AIRLESS

With features that make a great sprayer even better, the FinishPro II 395 PC is Graco's premier solution to fine finishing. It delivers a high-quality finish at a high production rate and can handle the most challenging materials.

### ULTIMATE APPLICATION VERSATILITY

#### Two Sprayers in One

- Switch between air-assisted to airless spraying modes with the flip of a switch

#### Single Selector Switch

- Simple, color-coded labels easily identify airless and air-assisted modes



### INCREASED SPRAY CONSISTENCY

#### SmartControl with Digital Display

- Delivers a consistent spray fan without pressure fluctuation
- Ideal for low pressure tips for fine finishwork and low overspray applications
- Displays real-time pressure, gallons, and diagnostics – ideal for monitoring performance and maintenance tracking

### SUPERIOR FINISH AND LONG LIFE

#### SmartComp

- Gun trigger-activated compressor – it's only running when you're spraying!
- Instant air to the gun with zero lag
- Reduces jobsite noise, resulting in less fatigue



### ELIMINATE COSTLY DOWNTIME

#### ProConnect Pump Replacement System

- Lasts 2X Longer than the next leading competitor
- No-tools Pump Replacement System
- Quickly repair your pump on the jobsite
- Eliminate downtime waiting on replacement parts or service

### SELF-CONTAINED AND FLEXIBLE DESIGN

- One plug runs the entire unit, simplifying jobsite operation

#### Super-Flex Hose Set

- Enables you to work in tight spaces and deliver the best finish quality
- Extremely lightweight to reduce fatigue

### PREMIER PERFORMANCE

#### G40 Spray Gun

- Industrial-grade quality delivers superior finishing results
- Integrated air valve improves gun handling
- Precision-Cut RAC X FF LP SwitchTip
- Precision-Cut Fine Finish Flat Tip



### PRECISION CUT RAC X FF LP SWITCHTIP

- Yields 2X the tip life with 50% less overspray for the Perfect Airless Finish™



AIR-ASSISTED AIRLESS SPRAYER	PART #
FinishPro II 395 PC	17C417

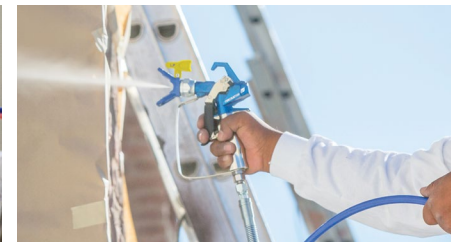
# FINISHPRO II 595 PC PRO

## AIR-ASSISTED AIRLESS

The FinishPro II 595 PC Pro is ideal for large commercial and industrial jobs with more features and higher performance to get the job done faster.

## TWO SPRAYERS IN ONE – RIGHT OUT OF THE BOX!

1. HIGH PRODUCTION AIR ASSISTED AIRLESS DEAL FOR HIGH END FINE FINISH JOBS
2. HIGH PRODUCTION AIRLESS SPRAYER IDEAL FOR EXTERIOR AND INTERIOR JOBS



## INCLUDES ALL THE FEATURES OF THE FINISHPRO II 395 PC, PLUS

### EXTRA AIRLESS GUN AND LOW PRESSURE TIP MEET ALL YOUR APPLICATIONS NEEDS

#### New Contractor PC™ Spray Gun with RAC X LP SwitchTip

- Lightest weight mechanical gun in its class
- Up to 50% lighter trigger pull force
- E-Z Fit™ adjustable trigger length
- RAC X LP SwitchTips reduce overspray by up to 50% while also providing 2X the tip life

### HIGHER FLOW FOR MORE PRODUCTIVITY

- The highest performing air-assisted airless sprayer! 50% more performance to support fine finish and high production needs.



### MORE SPRAYING AND LESS CLEANING

#### FastFlush™ High-Flow Cleaning System

- Delivers high-velocity fluid flow to clean the pump 2X faster using 1/2 the fluid



AIR-ASSISTED AIRLESS SPRAYERS	PART #
FinishPro II 595 PC	17E908



## REVOLUTIONIZE THE WAY YOU COMPLETE ALL SMALL JOBS

The next generation small application airless sprayer – designed to deliver higher quality results faster and easier with water-based, solvent and flammable architectural coatings.

### BREAKTHROUGH ELECTRIC POWERED AIRLESS GUN

- Instant response electronic gun virtually eliminates spits
- Lightest and smallest airless gun ever built

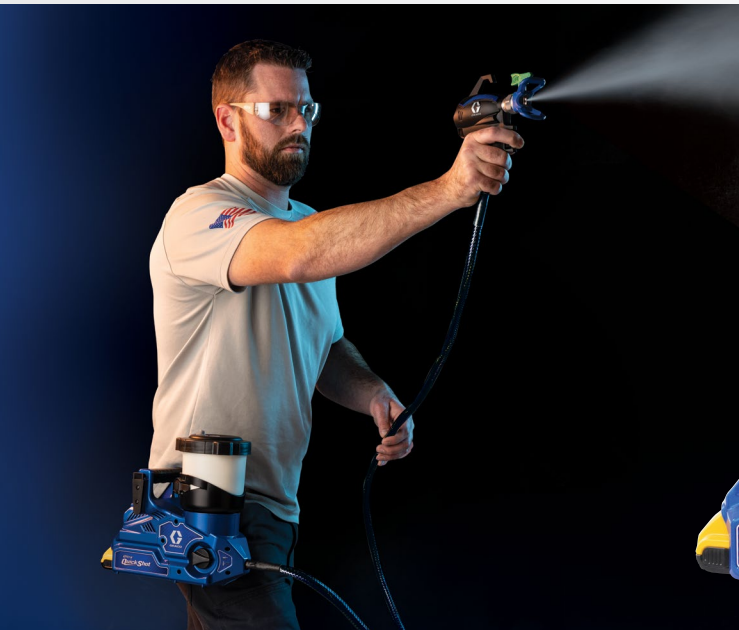
### ON-DEMAND PRESSURE AND FLOW CONTROL AT THE GUN

- Electrically connected gun to sprayer responds instantly to produce the best finish
- Quickly dial into the performance you need for any job

### ULTIMATE HANDS-FREE PORTABILITY

- 6 ft flexible hose for full reach and easy hose management
- Maximum portability delivered with hands-free belt and holster
- Refill faster with large-mouth Pour-N-Go Cup

**EASILY PRIME, CHANGE COLORS & CLEAN IN SECONDS – HOSE & GUN HOLD ONLY 1 OZ OF MATERIAL**



**Quick – SET UP**

**Quick – APPLICATION SPEED**

**Quick – REFILLS / COLOR CHANGE**

**Quick – CLEAN UP**

## FINISHPRO AIRLESS

Only Graco gives you the ability to customize your air-assisted airless sprayer to fit your needs – whether you need fast high-production spraying or a smooth HVLP-like finish.



VS



### RAC X LOW PRESSURE SWITCHTIPS

Graco's exclusive RAC X Low Pressure SwitchTips are for all applications; delivering the industry's best finish at the lowest airless spray pressure.

#### Recommended Uses:

- When speed and finish quality are equally important
- Up to 50% less over spray
- Up to 2X longer tip life
- Perfect airless finish
- Easiest pattern overlap
- Reduced prep and cleanup

### RAC X FINE FINISH LOW PRESSURE SWITCHTIPS (FFLPxxx)

(GREEN HANDLE)		ORIFICE SIZE – INCHES							
		IN	MM	.006	.008	.010	.012	.014	.016
Fan Width	2-4	51-102	106	108	110	112			
	4-6	102-152	206	208	210	212	214		
	6-8	152-203		308	310	312	314		
	8-10	203-254		408	410	412	414		
	10-12	254-305			510	512	514	516	
	12-14	305-356							616
Flow Rate (gpm)*			.04	.07	.11	.15	.21	.27	
Flow Rate (lpm)*			.15	.26	.41	.59	.80	1.04	
Recommended Filter Size			200	200	200	200	100	60	

Water @ 1000 psi (70 bar, 7.0 Mpa) - paints with a higher viscosity will decrease the flow rate. Order desired tip (part no. AAMxxx) from chart above. Example: for a tip with a 0.009 orifice and a 6 in (250 mm) pattern, order AAM309

### PRECISION-CUT FINE FINISH FLAT TIPS

The Precision-Cut Flat Tip is designed with stains and lacquers in mind and produces the best atomization for extremely smooth finishes for furniture and similar applications.

#### Recommended Uses:

- Where finish quality is the #1 requirement
- Delivers softest spray fan
- Offers fan width control
- Closer to HVLP quality
- Zero air cap buildup

### PRECISION-CUT FLAT TIPS AAM FLAT TIP (AAMXXX)

		IN	MM	.007	.009	.011	.013	.015	.017
Fan Width	2-4	(51-102)		109	111				
	4-6	(102-152)	207	209	211	213	215	217	
	6-8	(152-203)	307	309	311	313	315	317	
	8-10	(203-254)		409	411	413	415	417	
	10-12	(254-305)		509	511	513	515	517	
	12-14	(305-356)			611	613	615	617	
Flow Rate (gpm)			.05	.09	.12	.18	.24	.31	
Flow Rate (lpm)			.20	.33	.49	.69	.91	1.17	

### RAC X LOW PRESSURE SWITCHTIPS (LPxxx)

(NEON HANDLE)		ORIFICE SIZE – INCHES											
		IN	MM	.013	.015	.017	.019	.021	.023	.025	.027	.029	.031
Fan Width	4-6	102-152			217								
	6-8	152-203	313	315	317	319							
	8-10	203-254		415	417	419	421	423	425				
	10-12	254-305		515	517	519	521	523	525	527			
	12-14	305-356			617	619	621	623	625	627	629	631	
	14-16	356-406						723	725		729	731	
Flow Rate (gpm)*			.18	.24	.31	.38	.47	.57	.67	.77	.90	1.03	
Flow Rate (lpm)*			.69	.91	1.17	1.47	1.79	2.15	2.54	2.96	3.42	3.90	
Recommended Filter Size			100	60	60	60	60	60	60	60	60	30	

### USE THE CORRECT FILTER TO REDUCE TIP CLOGS

MESH SIZE	200	100	60	30
COATINGS	Stains, Varnishes, Polyurethane, Solvent-Based Paints	Lacquers, Enamels (Solvent), Solvent-Based Paints	Latex, Enamels (Latex)	Block Filler, Elastomeric
TIP SIZES	.006 – .013 in	.013 – .015 in	.015 – .029 in	.031 in +



## FINISHPRO AIR-ASSISTED AIRLESS & AIRLESS

### ORDERING OPTIONS

PART NUMBER	DESCRIPTION
-------------	-------------

#### GUNS AND HOSES

19Y443	Contractor PC Compact and RAC X FF LP 210 SwitchTip
17J261	FTx Gun with RAC X FF LP 210 SwitchTip
262929	G40 Air-Assisted Airless Gun
24U891	G40 Gun with RAC X Tip and 50 ft Super-Flex Hose Set
24U578	25 ft (7.6 m) Super-Flex Fluid and Air Hose Set
24U579	50 ft (15.2 m) Super-Flex Fluid and Air Hose Set
278750	1/8 in x 6 ft (3.2 mm x 1.8 m) Super-Flex Whip-Fluid
278751	1/4 in x 6 ft (6.4 mm x 1.8 m) Super-Flex Whip-Air
24U577	50 ft (15.2 m) Flex Wrap Hose Protector
24U576	25 ft (7.6 m) Flex Wrap Hose Protector
214698	3/16 in x 25 ft (4.76 mm x 7.6 m) Blue Max II Hose



#### FILTERS AND STRAINERS

224454	G40 Gun Filter, 60 Mesh (5-Pack)
224453	G40 Gun Filter, 100 Mesh (5-Pack)
25N894	G40 Gun Filter, 200 Mesh (3-Pack)
287032	Contractor PC, Contractor, and FTx Guns, 60 Mesh (1 per card)
287033	Contractor PC, Contractor, and FTx Guns, 100 Mesh (1 per card)
257130	Contractor PC, Contractor, and FTx Guns, 200 Mesh (1 per card)
19Y355	Contractor PC Compact Gun Filter 60 Mesh (1 per card)
19Y356	Contractor PC Compact Gun Filter 100 Mesh (1 per card)
19F826	Contractor PC Compact Gun Filter 200 Mesh (1 per card)
246384	Easy Out Manifold Filter, Black 60 Mesh - Short
246382	Easy Out Manifold Filter, Blue 100 Mesh - Short
246383	Easy Out Manifold Filter, Red 200 Mesh - Short
257094	ProX® Power-Piston Pump Manifold Filter, 40 Mesh
246385	Pump Inlet Strainer
127465	Disposable, In-line Air Moisture Filter (single)
24U981	Disposable, In-line Air Moisture Filter (5-Pack)
24U982	In-line Air Moisture Filter (25-Pack)



PART NUMBER	DESCRIPTION
-------------	-------------

#### PISTON PUMP REPAIR PARTS

17C487	Replacement Pump—replace pump on the job (for use on FinishPro II 395 PC and 595 PC Pro sprayers only)
24Y472	ProXChange Repair Kit (for use on FinishPro GX19 sprayer only)



#### MAINTENANCE AND REPAIR KITS

17H171	Hopper Assembly 1.5 gal (5.7 L) molded hopper attaches to sprayer in place of inlet suction hose. Ideal for spraying small amounts of material. Lid included. Smooth inside cleans up fast.
288514	Precision Cut Flat Tip Conversion Kit -G40 Gun
24U616	RAC X Conversion Kit-G40 Gun
289108	Severe Solvents Suction Set (for use on FinishPro II 395 PC and 595 PC Pro sprayers only)
288839	G40 RAC X Air Cap



#### CONTROL SPRAY STARTER KITS

Includes RAC X FF LP SwitchTip, gun and manifold filters for complete solution delivering ultimate control. (Compatible with 390-650 sprayers)

21A106	RAC X FF LP 106 and 200 Mesh Filter Control Spray Kit
21A206	RAC X FF LP 206 and 200 Mesh Filter Control Spray Kit



## ELECTRIC-POWERED AIRLESS GUNS

Experience airless like never before with the Contractor PowerShot. These electronic-powered airless guns virtually eliminate tip spits while featuring the industry's lightest trigger pull force for comfortable all-day spraying on a single charge.

### ELECTRIC-POWERED GUN VIRTUALLY ELIMINATES SPITS

- Instant-Response trigger actuates 80X faster than traditional guns

### SPRAY ALL DAY WITH GREATER COMFORT

- The world's lightest gun ever built – Only 1.1 lbs (0.49 kg) in-hand weight
- Industry's lightest trigger pull force – Only 0.8 lbs (0.36 kg) at any spray pressure

### HANDS-FREE HOSE MANAGEMENT

- Quickly attach the PowerPak system to belt for hands-free hose management



**OPERATES WITH EVERY AIRLESS SPRAYER**

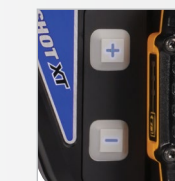


**CONNECTS EXCLUSIVELY WITH XT PAINT SPRAYERS FOR A NEW LEVEL OF PERFORMANCE**



**INCLUDES ALL FEATURES FOUND ON CONTRACTOR POWERSHOT STANDARD PLUS INSTANT GUN-TO-SPRAYER COMMUNICATION**

- Remote pressure control up to 200 ft (60 m) away
- Eliminate material blast and gun kick back with SmartStall™



Remote Pressure Control



SmartStall – Trigger pull and release starts and stops the motor

ELECTRIC-POWERED AIRLESS GUNS	PART #
Contractor PowerShot Standard	18H300
Contractor PowerShot XT	18H301
Contractor PowerShot XT and SmartDisplay XT	18H313
PowerShot ProConnect Cartridge	2005788



**SEE IT IN ACTION**  
[graco.com/PowerShot](http://graco.com/PowerShot)



# FINE FINISH SPRAYER SPECIFICATIONS

		EXTREME CONTROL					
		Small Jobs / Thin Viscosity Materials			Medium to Large Jobs / Capable of Atomizing Thicker Coatings		
		FINISHPRO HVLP 7.0	FINISHPRO HVLP 9.0	FINISHPRO HVLP 7.0	FINISHPRO HVLP 9.0	FINISHPRO HVLP 9.5	FINISHPRO HVLP 9.5
SPECIFICATIONS	Technology	High Volume Low Pressure	High Volume Low Pressure	High Volume Low Pressure	High Volume Low Pressure	High Volume Low Pressure	High Volume Low Pressure
	Maximum psi (bar)	7.0 (.48)	9.0 (.62)	7.0 (.48)	9.0 (.62)	9.5 (.65)	9.5 (.65)
	Turbine Stages	3-Stage	4-Stage	3-Stage	4-Stage	5-Stage	5-Stage
	Cup qt (L)	1 (1)	1 (1)	1 (1)	1 (1)	1 (1)	2 (1.9)
	Weight lb (kg)	18 (8.1)	19 (8.6)	23 (10.4)	24 (10.8)	26 (11.7)	30 (13.6)
	Max Hose	40 ft (12 m)	40 ft (12 m)	60 ft (18 m)	60 ft (18 m)	60 ft (18 m)	60 ft (18 m)
	Air Ball Valve Included	No	No	Yes	Yes	Yes	Yes
	Artisan Air Valve Installed	No	No	Yes	Yes	Yes	Yes



SERIES TYPE		STANDARD	PROCONTRACTOR	PROCOMP			
MODEL	Part Number	17N263	17N264	17N265	17N266	17N267	17N269
	Gun	EDGE II	EDGE II	EDGE II PLUS	EDGE II PLUS	EDGE II PLUS	EDGE II PLUS
INCLUDES	Hose	20 ft (6 m) Super-Flex Air Hose	20 ft (6 m) Super-Flex Air Hose	30 ft (9 m) Super-Flex Air Hose	30 ft (9 m) Super-Flex Air Hose	30 ft (9 m) Super-Flex Air Hose and	30 ft (9 m) Super-Flex Air Hose and
	Whip Hose	-	-	-	-	Yes	Yes
	Quick Release Fluid Set	#3 (.051 in, 1.3 mm)	#3 (.051 in, 1.3 mm)	#3 (.051 in, 1.3 mm)	#3 (.051 in, 1.3 mm) #4 (.071 in, 1.8 mm)	#3 (.051 in, 1.3 mm) #4 (.071 in, 1.8 mm) #5 (.087 in, 2.2 mm)	#3 (.051 in, 1.3 mm) #4 (.071 in, 1.8 mm) #5 (.087 in, 2.2 mm)
	Filter	Foam	Foam	Automotive Main Filter	Automotive Main Filter	Automotive Main Filter	Automotive Main Filter
WEAR PARTS	Gun Maintenance Kit	256960	256960	256960	256960	256960	256960
	Gun Repair Kit	17P708	17P708	17P708	17P708	17P708	17P708
MANUAL	Turbine	3A4967	3A4967	3A4967	3A4967	3A4967	3A4967
	Gun	3A4980	3A4980	3A4980	3A4980	3A4980	3A4980

		HIGH PRODUCTIVITY			
		Small / Medium Jobs		Medium / Large Jobs	
		FINISHPRO GX 19 CORDED	FINISHPRO GX 19 CORDLESS	FINISHPRO II 395 PC	FINISHPRO II 595 PC PRO
SPECIFICATIONS	Technology	Airless	Airless	Air-Assisted Airless	Air-Assisted Airless
	Maximum Tip Size	.019	.019	.021	.027
	Maximum psi (bar)	3000 (207)	3000 (207)	3300 (227)	3300 (227)
	Maximum gpm (lpm)	.38 (1.44)	.38 (1.44)	.47 (1.78)	.70 (2.6)
	Weight lb (kg)	31 (14.1)	29 (13.2)	107 (48.5)	108 (49.0)
	Motor hp (dc)	1/2	1/2 Brushless	7/8 TEFC	1.6 Brushless
	Hose Wrap	-	-	Flex Wrap	Flex Wrap
	Compressor Output	-	-	3.2 cfm at 35 psi	3.2 cfm at 35 psi



MODEL	Part Number	17F924	25U341	17C417	17E908
INCLUDES	Power Source	Corded	(2) DeWALT 60VMax FlexVolt 6.0 ah Batteries and (1) Fan-Cooled Fast Charger	Corded	Corded
	Filter(s)	100 Mesh Gun Filter	100 Mesh Gun Filter	100 Mesh Gun Filter	60 Mesh Gun Filter 100 Mesh Gun Filter
	Tips	RAC X FFLP210	RAC X FFLP210	RAC X FFLP210 AAM309	RAC X FFLP210 RAC X LP517 AAM309
	Fluid Hose	3/16 in x 25 ft (4.8 mm x 7.6 m)	3/16 in x 25 ft (4.8 mm x 7.6 m)	1/4 in x 50 ft (6.4 cm x 15.2 m)	(2) 1/4 in x 50 ft (6.4 cm x 15.2 m)
	Fluid Whip Hose	-	-	1/8 in x 6 ft (3.2 mm x 1.8 m)	1/8 in x 6 ft (3.2 mm x 1.8 m)
	Air Hose	-	-	3/8 in x 50 ft (9.5 mm x 15.2 m)	3/8 in x 50 ft (9.5 mm x 15.2 m)
	Air Whip Hose	-	-	1/4 in x 6 ft (6.4 mm x 1.8 m)	1/4 in x 6 ft (6.4 mm x 1.8 m)
	Gun	FTx with RAC X FF LP SwitchTip	Contractor PC Compact with RAC X FF LP SwitchTip	G40 with RAC X FF LP SwitchTip and Flat Tip	G40 with RAC X FF LP SwitchTip and Contractor PC with RAC X LP SwitchTip
MANUAL	SmartComp	-	-	Yes	Yes
	Display	Pressure Gauge	Pressure Gauge	Digital	Digital
	Operation/Parts	3A3212	3A8429	334730	334598
PUMP	Replacement Pump	24Y472 ProX (Replacement Kit)	24Y472 ProX (Replacement Kit)	17C487 (Full Endurance Pump)	17C487 (Full Endurance Pump)



# SPRAY WITH CONFIDENCE

## Industry-Leading Warranty Protection

Every Graco electric sprayer is backed by the industry's best warranty coverage.

### 3-YEAR ENGINE WARRANTY\*

If the engine fails from normal use, the engine manufacturer will replace it under warranty for the original owner for 3 years.

### LIFETIME DRIVETRAIN WARRANTY\*

If the drivetrain fails from normal use, we'll replace it under warranty for the original owner for the life of the sprayer.

### 30-DAY "JUST ADD PAINT" REPLACEMENT GUARANTEE\*

Dissatisfied? Simply return the sprayer to the place you bought it within 30 days. They'll either exchange it for an identical sprayer or you can trade up to a larger sprayer at an additional cost.

### 3-YEAR WARRANTY\*

Coverage against defects in materials and workmanship on the entire sprayer.

### DOWNTIME ELIMINATOR PROGRAM\*

Part needed for a warranty repair not in stock at your distributor? Get FREE next business day air freight delivery when distributor orders the part by 2 p.m. CT.

### CONVENIENT SERVICE

Graco offers more than 5,500 authorized distributor locations in North America and over 700 locations to administer warranty repair.

\*NORTH AMERICA ONLY. See your local Graco Distributors for country specifics. See printed product warranty for complete warranty terms and conditions.



## Finish Every Job, Every Time

Downtime is costly. With the Endurance Advantage Program, you'll never need to worry about it again. Depending on the sprayer you purchase:

**Receive up to 70% OFF the list price of an Endurance Pump  
OR — Receive a FREE Repair Kit if you'd rather repack your own pump.**

Follow the registration instructions included with your sprayer.

For more information visit [graco.com](http://graco.com)